



Ministry of Environment  
and Food of Denmark  
Nature Agency



# Mapping and fighting *Rosa rugosa*









# Growth and impact

2002

48m

1159 m<sup>2</sup>



2012

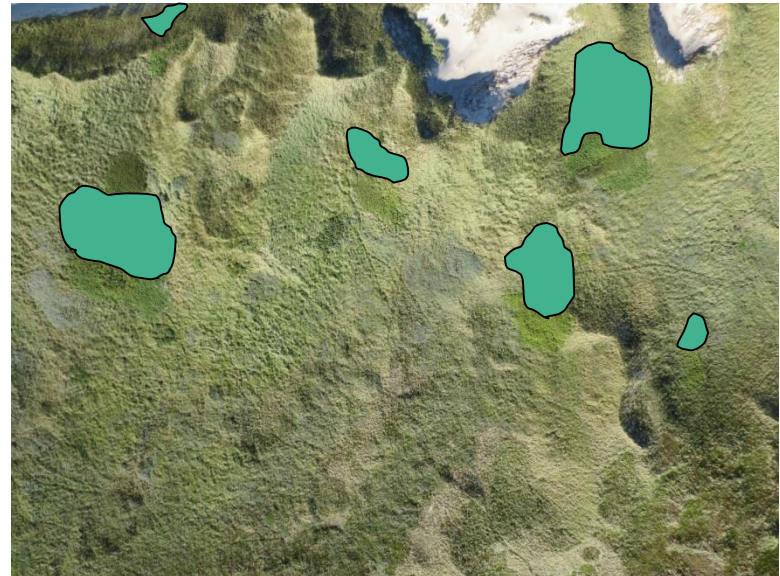
56m

1649 m<sup>2</sup>



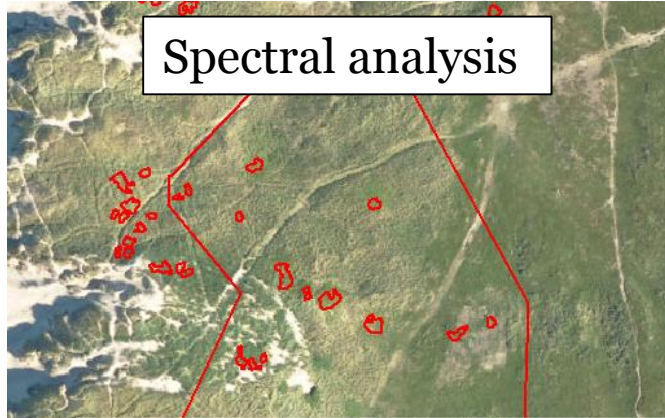


# Spectral analysis

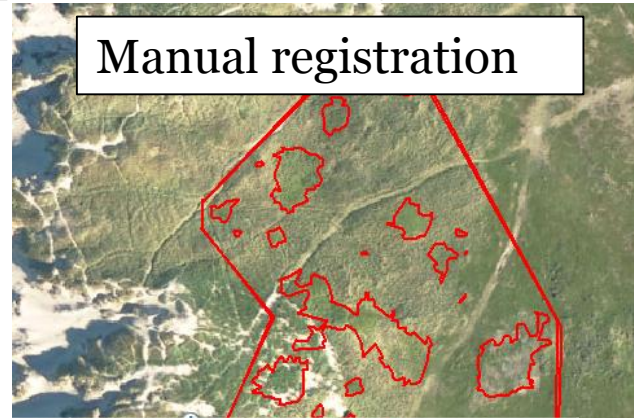




# Validating the spectral analysis

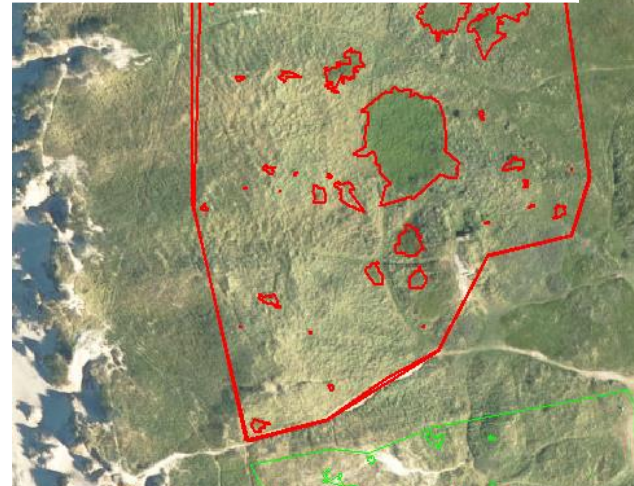
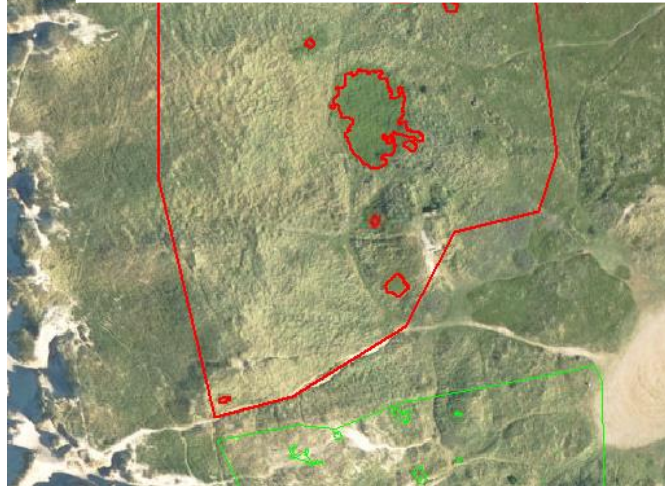


Spectral analysis



Manual registration

	Total area (ha)	Spectral analysis (ha)	Manual registration (ha)	Distribution(%) [spectral analysis]	Distribution (%) [manual registration]
Nymindégab 1	2,7	0,10	0,40	3,8	14,1
Nymindégab 2	3,1	0,02	0,06	0,7	1,9
Nymindégab 3	4,7	0,16	0,30	3,4	6,4
Spidsbjerg	16,9	0,04	0,49	0,2	2,9
	27,4	0,32	1,25	1,16	4,51





# Covering with plastic and weed mat

0,3 ha





# Milling

17 ha

**Aug 2016**



**Sept 2017**



# Excavating

1 ha

**Oct 2016**



**Sept. 2017**





# Grazing

25 ha





# Herbicide treatment





# Economy

Method	Costs per sqm (€)
Covering with plastic	15-25
Excavating	2.2
Milling	0.27-0.63
Grazing	?
Herbicide	3.3



# Changing peoples' attitudes towards *Rosa rugosa*



## Hyben spørgsmål 1

Du valgte svarmulighed: **En plante- eller dyreart som ikke er hjemmehørende i Danmark og som truer den oprindelige flora eller fauna**

✓ Svaret er korrekt

Fortsæt til næste spil-stregkode og scan igen.

⊕ Hvor er jeg?

